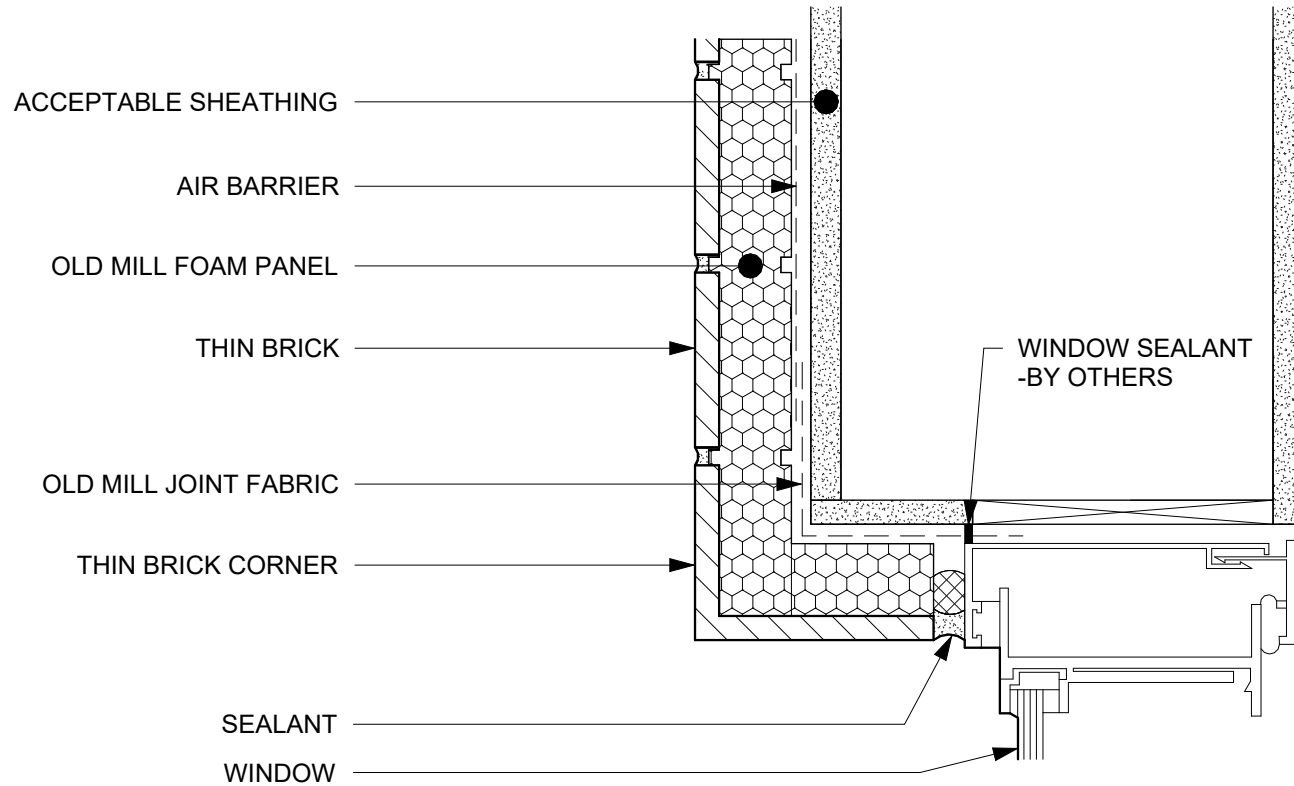


TYPICAL WINDOW JAMB DETAIL - RECESSED



SYSTEMS



DRAWING NUMBER	SCALE	DATE	SHEET SIZE	REVISION	DISCLAIMER
----------------	-------	------	------------	----------	------------

DT120 3" = 1'-0" 6/1/2023 A4 1

This technical detail serves as a guide for the appropriate use of Old Mill Building Products™. It is the responsibility of the customer's project designer to ensure that the product is fit for purpose by providing specialized design and detailing. The designer should consider any specialized factors of the project while assessing product suitability. It is essential to review this specification detail alongside the relevant product installation guide and all other appropriate technical literature related to Oldmill Brick™ products at the time of installation.