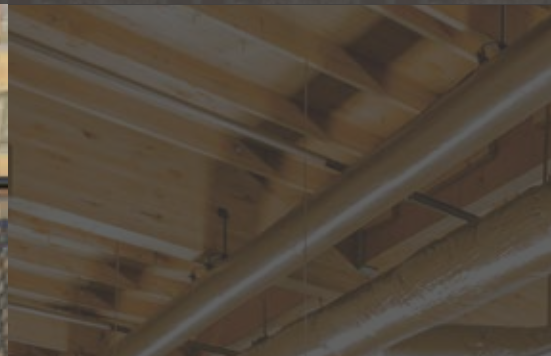


oldmill

THIN BRICK SYSTEMS™



2020
COLOR GUIDE

Welcome to Old Mill Brick

About Us

Founded in 2007, Old Mill Brick is proud to represent sustainable and beautiful options to add thin brick to any surface. Old Mill Brick's patented Brickwebb™ and BrickPanel+™ systems have transformed the brick industry by empowering users to easily and efficiently add genuine kiln fired clay brick to residential or commercial projects.

Brickwebb™

With Brickwebb's patented webbing system, you can complete your beautiful brick project quickly and easily.

BrickPanel+™

Fully code-compliant wall system with Continuous Insulation, BrickPanel+ is the most advanced and economical wall system.

Thin Brick

Sourced from the finest materials, Old Mill Brick thin brick allows for versatile design and easy installation that can transform virtually any surface.



oldmill
THIN BRICK SYSTEMS™

Brick Color:

Left Bottom: Pony Express

Top Right: Castle Gate

Bottom Right: Boston Mill



The Collections Color Guide

4-5
Colonial Collection

6-8
Modern Collection

9
Terra Collection

10
**BrickPanel+
Tools and Materials**

11
Features

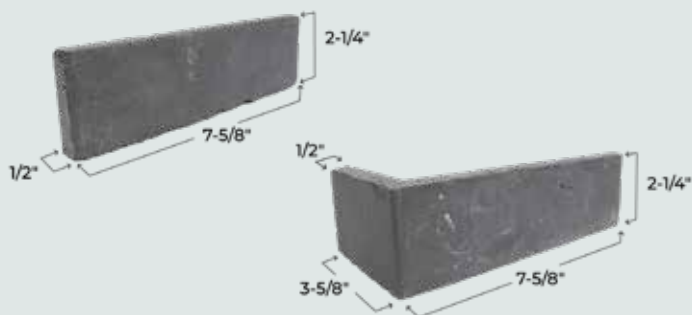


Brick Color:
Top: Rushmore
Bottom: Cafe Mocha



Colonial Collection

The Colonial Collection features natural variation and unique character in both tumbled and straight-edge design.



Café Mocha

Tumbled

Earthy tones with subtle variation accented by pops of light clay and slate.



Boston Mill

Tumbled

Red clay with slight variations reminiscent of classic Boston-style brick.



Columbia Street

Tumbled

Warm hues with sienna undertones accented by variations of earthy clay and slate.



Castle Gate

Tumbled

Red clay variations as a base with pops of burnt mocha, white wash, and earthy contrasts.



Dixie Clay

Tumbled

Reminiscent of red rocks of the southwest with warm hues of amber, gold, and copper.



Promontory

Tumbled

Cool and romantic tones underscored by salty and rugged neutral grays.



Alamo Sunrise

Tumbled

Golden hues with pops of burnt sienna and cloudy gray reminiscent of a Texan sunrise.



Yosemite

Tumbled

An adventurous, outdoorsy color inspired by mountain granite grays and canyons of red.

Brick Color: Left top: Dixie Clay, Whitewashed German Schmear, Kitchen Backsplash | Right page bottom: Rushmore



Rushmore

Tumbled

Calming cooler tones of deep slate and gray dusted on top of pearl blush hues.



Pony Express

Straight-Edge

Reminiscent of the fields of the midwest with wheat tones accented by pops of clay and amber.



El Capitan

Tumbled

Imagine a forest of white and gray Birch trees and the interplay of these colors to blend the perfect tint of gray.



Cordova

Straight-Edge

Reminiscent of red rocks of the southwest with warm hues of amber, gold and copper with a straight edge.



Mill Creek

Tumbled

A color play of light browns and darkest reds, this tumbled rustic hue has genuine multi-faceted character.



Independence

Straight-Edge

Red clay with slight variations reminiscent of classic Boston-style brick.



Sundance

Tumbled

Whites and yellows as sundrenched summer days a color that brings out warmth and lightness.



Little Cottonwood

Straight-Edge

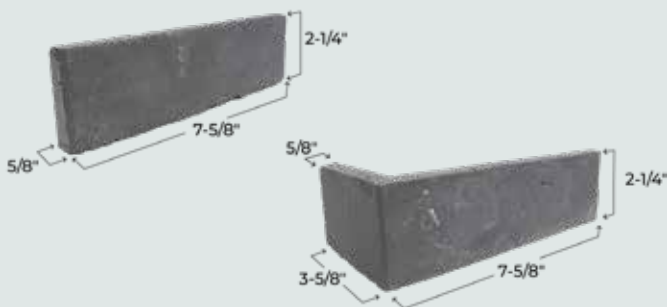
Muted slate and wine tones dusted with powder white reminiscent of majestic snow-capped mountains.





Modern Collection

The Modern Collection features clean and minimalistic lines that turn any space into a contemporary canvas.



Atlanta

Straight-Edge

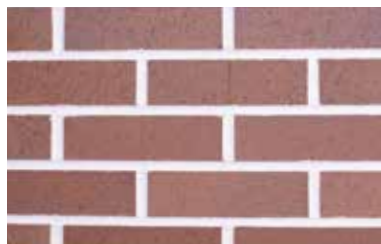
Simple as a summer evening, urbane southern chic with warm red hues.



Colombo

Straight-Edge

Amber tinted a chroma for du jour overlays of visual sophistication.



Nairobi

Straight-Edge

Blazing as the desert light this saturated red fills the room with raw natural clay beauty.



Manchester

Straight-Edge

Darkened as a city in the rain, this color takes a modern cue of a rich, wet hue of deepest red.



Santiago

Straight-Edge

Fused with natural orange and red tones that intermix, creating a sophisticated but straightforward charm.



Manhattan

Straight-Edge

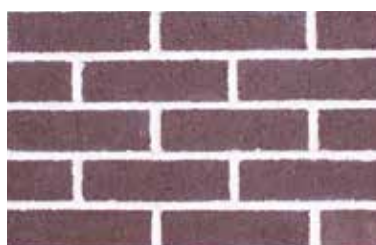
This earthy color plays out like jazz mingling with black shadowed tones of deep brown.



Shanghai

Straight-Edge

A fresh take, this exotic play of gray, red, and yellow tones make an exquisite backdrop or accent.



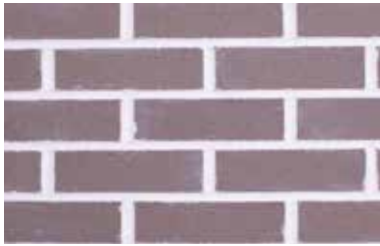
Toronto

Straight-Edge

Echos of a familiar brown, surprises with a nuanced spectrum and modern undertones.

Brick Color:

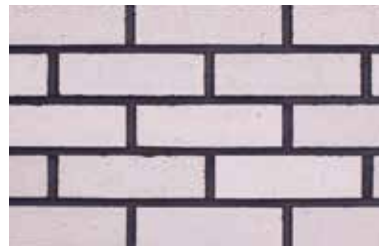
Left: As Toronto | Bottom Right page: Mixture of London, Rome & Hanoi



Rome

Straight-Edge

Statuesque, antiquity gray, a refined hue revived with an urbane tone for a fresh new classic.



Stockholm

Straight-Edge

A clean light beige blend of modern and traditional creates a hue of sensational aesthetic.



Hanoi

Straight-Edge

As fragrant Asian tea, the deepest browns and blacks blend to an artistic delight.



Vegas

Straight-Edge

Style not glitz, hues of polished tan, and radiant white form a worldly blend.



London

Straight-Edge

Gray of misty fog, muted subtle color shimmers as whites and gray interplay.



Brisbane

Straight-Edge

A brown with speckled white influenced by the earthy Down Under landscapes and brilliant cityscapes.



Cairo

Straight-Edge

Stunning sands of vast wild deserts, suntanned beige refines any space.



Seattle

Straight-Edge

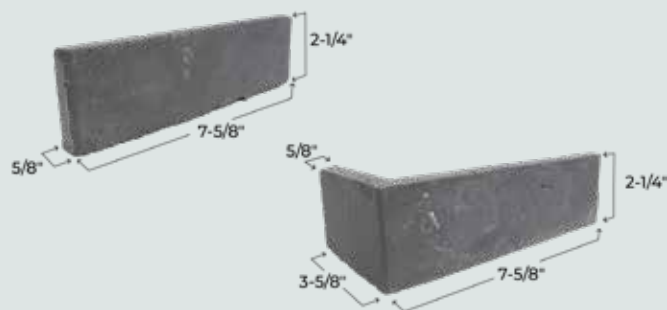
Toned whites and tan intermix to the fusion of progressive style.





Terra Collection

The Terra Series showcases the raw beauty of earth's natural color; each color displays unique variations and textures.



Kokkini Beach

Straight-Edge

Soft tints of warm sand mellowed by tumbling waves creating a mixture of seashore hues and soft varied textures.



Rustic Iron

Straight-Edge

The timelessness of rustic reds, with a trendy boldness of hue, with soft coffee-colored edges and surfaces.



Ocean Coral

Straight-Edge

Deep-sea coral reds muted by the tides and sweeping white sand creating varied edges as coral itself.



Sunset Red

Straight-Edge

Capturing the warm dusky reds of sunset and darkening colors as fall fields of the midwest.



River Silt

Straight-Edge

As though created from streams of underwater earth, River Silt has a calm well-worn appearance with hues of red.



Vintage Oak

Straight-Edge

Homage to the magnificent Oak trees' color & texture, it's multicolored browns and soft patina of whites created through decades of time and change.



Bristol White

Straight-Edge

Clean and bright, a sunny inspiring backdrop for any room style.



Carbon Black

Straight-Edge

Dense and dark as a sweet summer night. A color so deliciously rich in reds, it appears edible.

Brick Color: Top Left: River Silt with German Schmear grout



brickpanel⁺ by oldmillbrick

Add insulation and reduce utility bill cost, eliminate cold & hot spots, or warm your basement with BrickPanel+™.



BrickPanel+ Thin Brick Do-it-Yourself Kit



Old Mill Modified Adhesive



BrickPanel+ Thin Brick Foam Panel -

1" x 4' x 4' (25 Sheets)	1" x 2' x 4' (7 Sheets)
2" x 4' x 4' (25 Sheets)	2" x 2' x 4' (7 Sheets)
3" x 4' x 4' (25 Sheets)	3" x 2' x 4' (7 Sheets)
4" x 4' x 4' (25 Sheets)	4" x 2' x 4' (7 Sheets)



Old Mill Air and Water Barrier



Old Mill Fasteners



DESIGN FLEXIBILITY

Build archways, create patterns and mix colors to create the perfect look for your project.



CODE COMPLIANCE

BrickPanel+™ is a complete fire-tested thin veneer wall assembly system that is also the most cost-effective way to incorporate Continuous Insulation and air barrier into the building envelope.

SAVE TIME & MONEY

Our systems make thin brick installation so simple that virtually anyone could do it in a short amount of time.



QUALITY OF INSTALL

Our systems ensure your thin brick has equal spacing, straight lines, and long-lasting durability.

Brick Color: Top: Rushmore
Left: Café Mocha, Right: Cordova
Bottom: Castle Gate
Right Page: Boston Mill

FARMHOUSE
Christmas





OLD MILL BRICK LLC | 14932 S Concord Park Drive
Bluffdale, UTAH 84065 | oldmillbrick.com